



Caledonian

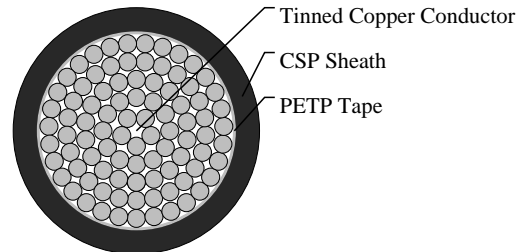
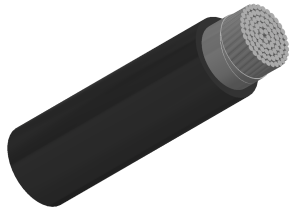
Railway Cables

www.caledonian-cables.com

marketing@caledonian-cables.com

650/750V Track Feeder Cables to RT/E/S/21101

RF21101-H01N2-D-650/750V-1G630SCU



APPLICATIONS

The cables can provide the 450/750 volt DC supply from Traction Substations and Track Paralleling Huts to conductor rails, negative cable connections and where appropriate bonding.

STANDARDS

NR/PS/ELP/21101 (formerly RT/E/S/21101)

BS 638 Part 4

UND 21027

VOLTAGE RATING

650/750V

CABLE CONSTRUCTION

Conductors: Class 5 stranded tinned copper to BS EN 60228:2005 (previously BS6360).

Core wrapping: PETP (Polyethylene Terephthalate).

Sheath: CSP(Chlorosulfonated Polyethylene) type RS4 to BS6899.

H.O.F.R. heat resistant, oil resistant and flame retardant.

PHYSICAL AND THERMAL PROPERTIES

Minimum Bending Radius: 8 x OD

Operating Temperatures: -25°C to +85°C (during operation); -10°C to +70°C (during installation)

Electrical Properties

Electrical Characteristics at 20°C:

Maximum DC Conductor Resistance:0.0286Ω/km

Assigned Continuous Current Rating:1500 A

DIMENSION AND PARAMETERS

No. of Cores × Cross-sectional Area	No./Nominal Diameter of Strands	Nominal Sheath Thickness	Nom. Overall Diameter	Approx. Weight	Polarity / Gland Size
No.×mm ²	no./mm	mm	mm	kg/km	



Caledonian

Railway Cables

www.caledonian-cables.com

marketing@caledonian-cables.com

1 x 630	2257/0.6	4	45.9	6879	positive/63S
---------	----------	---	------	------	--------------



Highly Flexible



Impact Resistant



Laid In Ducts



Oil Resistant



Water Resistant